

# TROMMEL WHEELS

Rubber & Polyurethane Wheel Solutions

Engineering supported product design and development

High performance compounds for any environment or application

Vibration reduction with concentric SuperSmooth™ tread profile

Available in hub-style and mold-on assemblies



**SUPERIOR**  
TIRE & RUBBER CORP.



Management  
Systems  
Registered  
to ISO 9001  
Quality  
ISO 9001

**ENGINEERING REVOLUTION™**  
©2020 Superior Tire & Rubber Corp. All Rights Reserved.

# TROMMEL WHEELS



## For Any Trommel Application & Design

Superior Tire's rubber & polyurethane compounds are engineered to perform in the high demands of Trommel applications. Addressing issues often overlooked such as seasonal conditions, load ratings, heat build-up, cold start vibration, and product longevity.

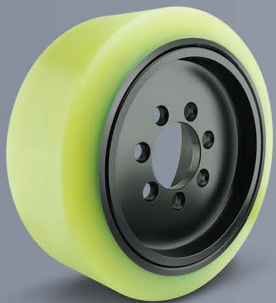


### Premium Rubber *Universal Applications*

- General Use for most trommel applications
- Reduced Vibration in Cold Start-ups
- Heat Resistant & lower internal operating temperature
- Low Rolling Resistance



Suitable for all Weather Conditions



### Cushothane® XL-AC™ *High Performance*

- Heavy and abusive loads
- Runs cooler internally
- Comes with SuperSmooth™ Tread Profile
- Uses state-of-the-art XL3™ Bonding Technology.



#### Common Polyurethane Tire Compound

- Needs more energy to roll the tire
- Higher internal temperature

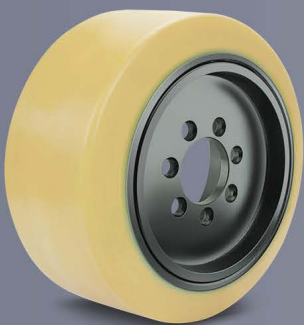


#### Cushothane® XL-AC™ Tire Compound

- Needs less energy to roll the tire
- Lower internal temperature



Same Contact Area



### Cushothane® ULTRA-ES™ *For Extreme Applications*

- Drum mixers critical to high production volumes
- Lowers risk in remote locations
- Extended service life
- Extreme environments



Magnified tire surface

### SuperSmooth™ Tread Profile Comes Standard

This machined-round tread feature comes standard for all of our polyurethane Trommel tires & wheels. With Total Indicated Runout of 0.015", SuperSmooth™ offers greater stability & cooler operating temperatures - providing smoother operation throughout the entire wear-life while prolonging wheel work-life.

\*Refer to Terms and Conditions at [www.SuperiorTire.com](http://www.SuperiorTire.com)



40 Scientific Rd., Warren, PA 16365  
1.800.289.1456 [www.SuperiorTire.com](http://www.SuperiorTire.com)

**SUPERIOR**  
TIRE & RUBBER CORP.  
ENGINEERING REVOLUTION™