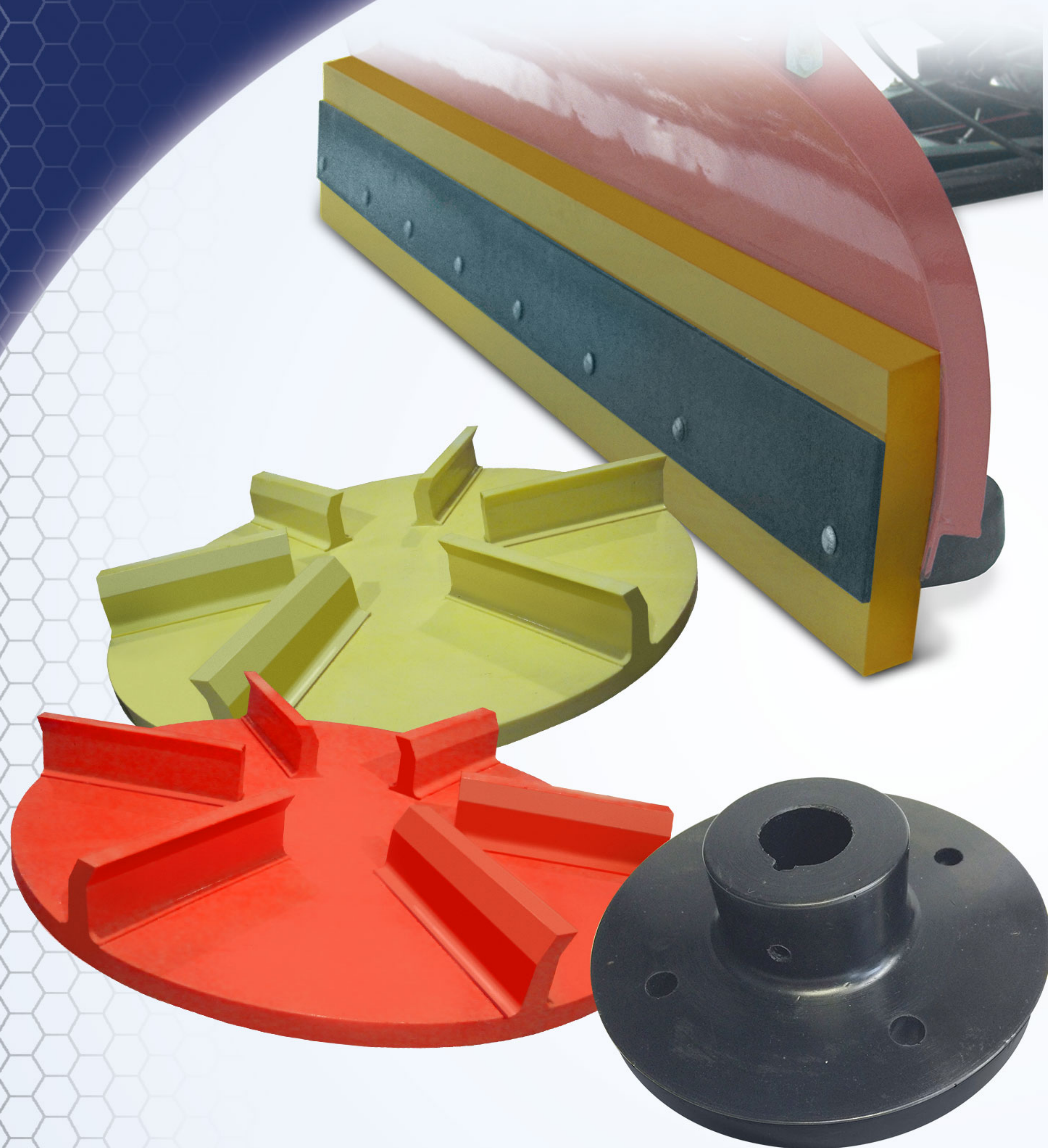


Polar Edge™

Polyurethane Winter Wear Parts



- Longer Wear-Life
- Flexibility Even at a Freezing -35° F Temperature
- Reduce Costly Repairs to Obstacles & Road Surfaces
- Highest Quality with Immediate Availability



SUPERIOR
TIRE & RUBBER CORP.
HEAVY EQUIPMENT COMPONENTS



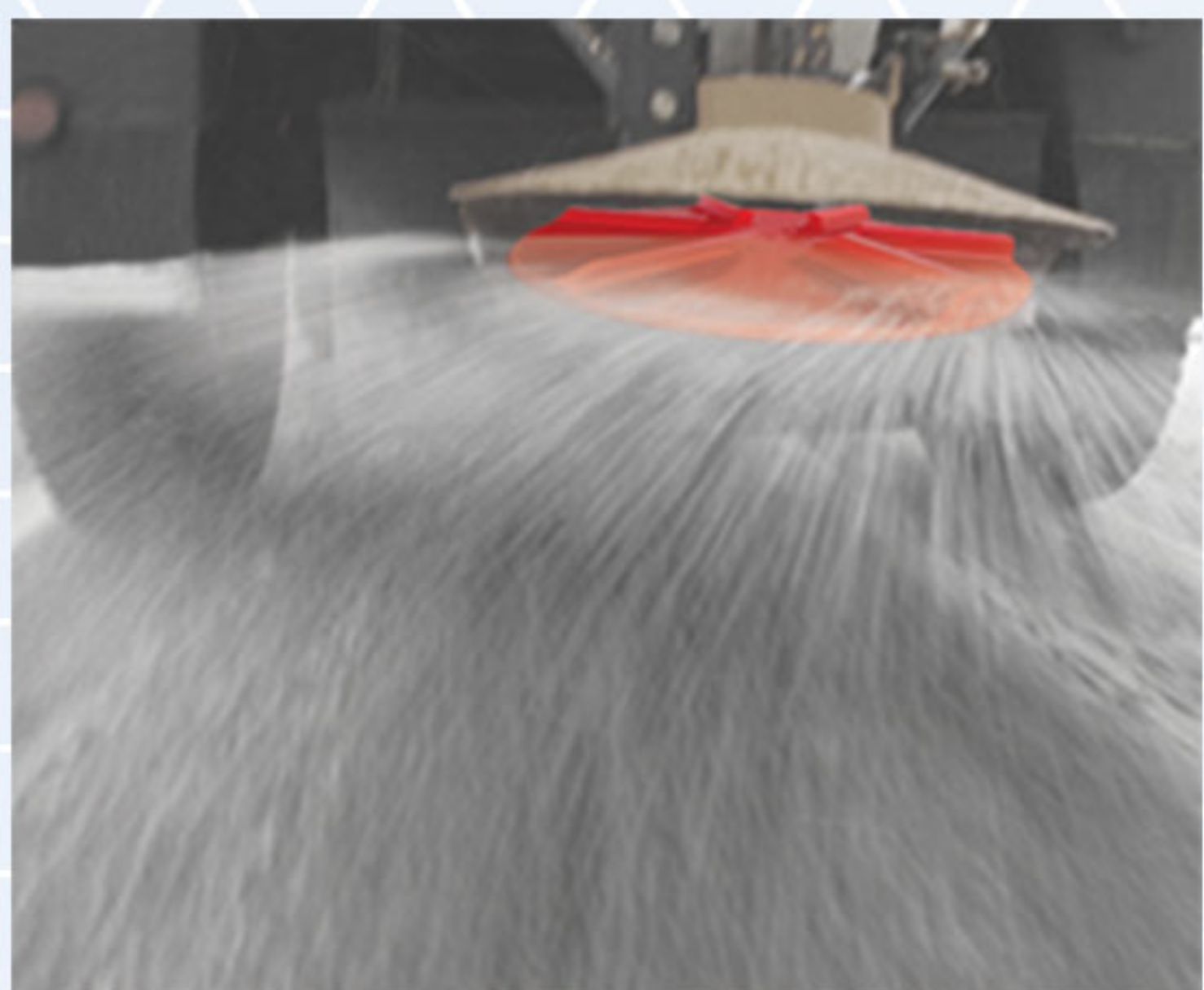
Certified System
Management
Systems
Registered
Quality
ISO 9001
to ISO 9001

40 Scientific Rd. Warren, PA 16365

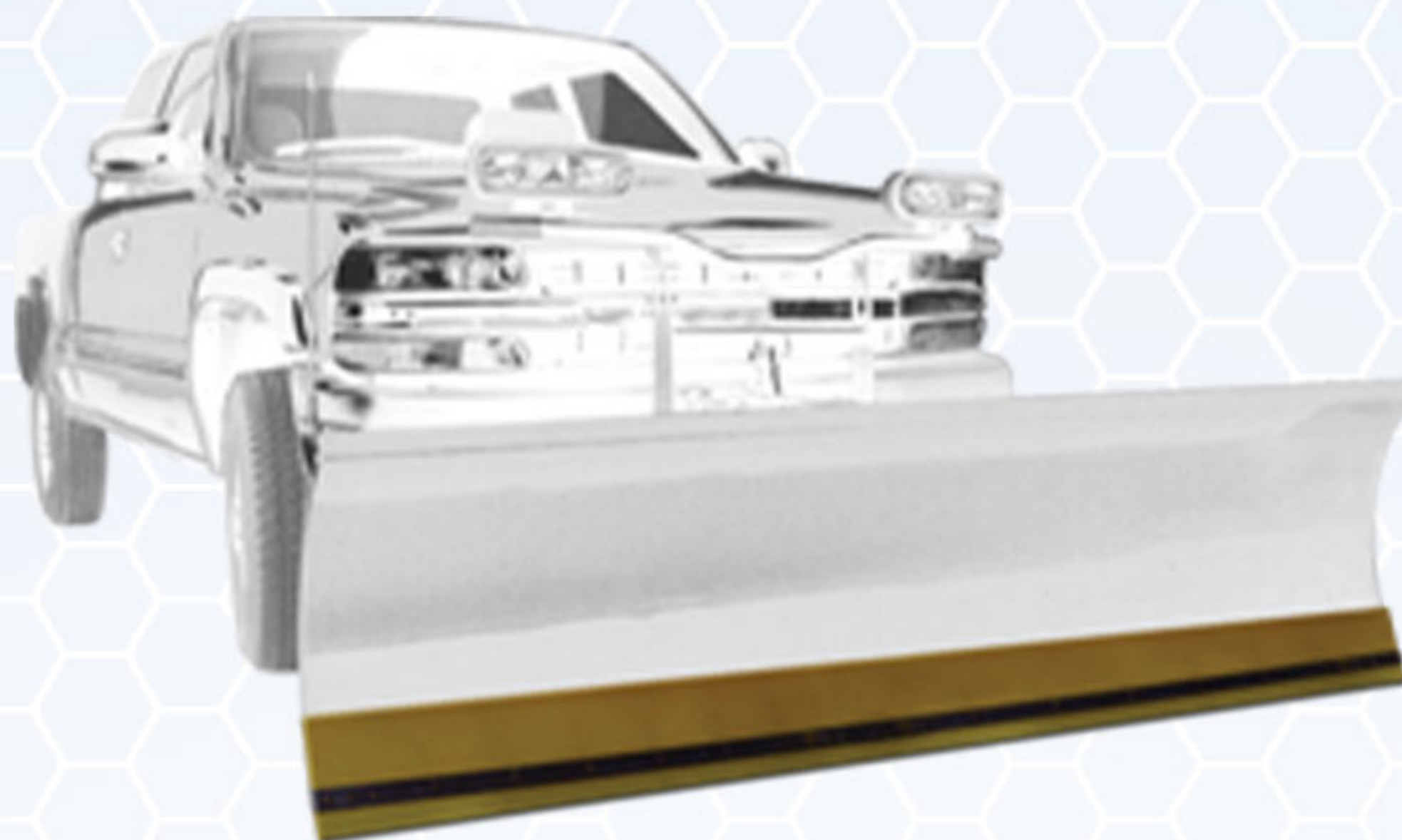
1.800.289.1456 www.SuperiorTire.com

Polar Edge™

Polyurethane Winter Maintenance Products



Polar Edge™ Spreader Spinner



Polar Edge™ Cutting Edge

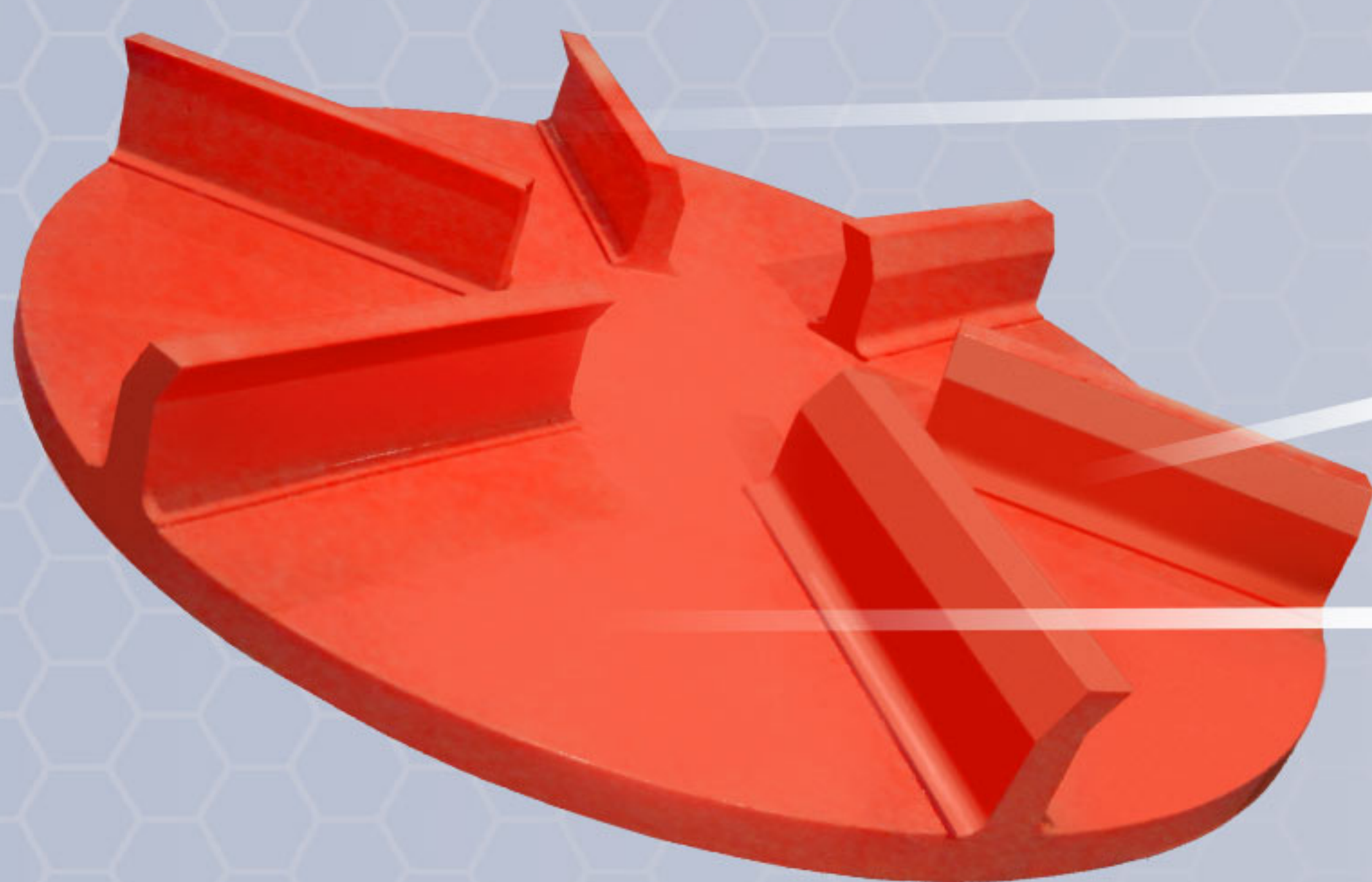
Polar Edge™ Spreader Styles

Whether your spreader requires a mold-in hub, needs a custom-drilled bolt pattern or has a top or bottom motor mount, Polar Edge™ Spreader Spinners are available in multiple designs that fit any make and model of salt or aggregate spreader.



Spinner Color may vary from shown

Polar Edge™ Spreader Spinners



Lower Maintenance - Long lasting, rust-proof and wont break or chunk at temperatures as low as -35° F.

Safer and More Even Spreading - Low trajectory fin design.

Various Styles & Sizes - Clockwise, counter clockwise, straight fin and molded in hub - 12", 14", 16", 18", 20", 22", & 24".

Polar Edge™ Cutting Edges

Reduce Costly Repairs to Obstacles and Road Surfaces Such as:

- Runway Lights
- Brick or Cobblestone Streets
- Stamped Concrete or Asphalt
- Paver Stone Surfaces
- Parking Lots, Curbs or Speed Bumps
- Manhole Covers



High Flexibility - Will not bend with impact damage reduction on road surfaces and trucks, even at -35° F.

Extended Work Life - Proven to outlast rubber by up to 10 times and steel by up to 5 times, lowering maintenance costs, increasing productivity, and profits.

Non-Damaging to Surfaces - Unlike steel edges, Polar Edge products will not damage roads or other obstacles.

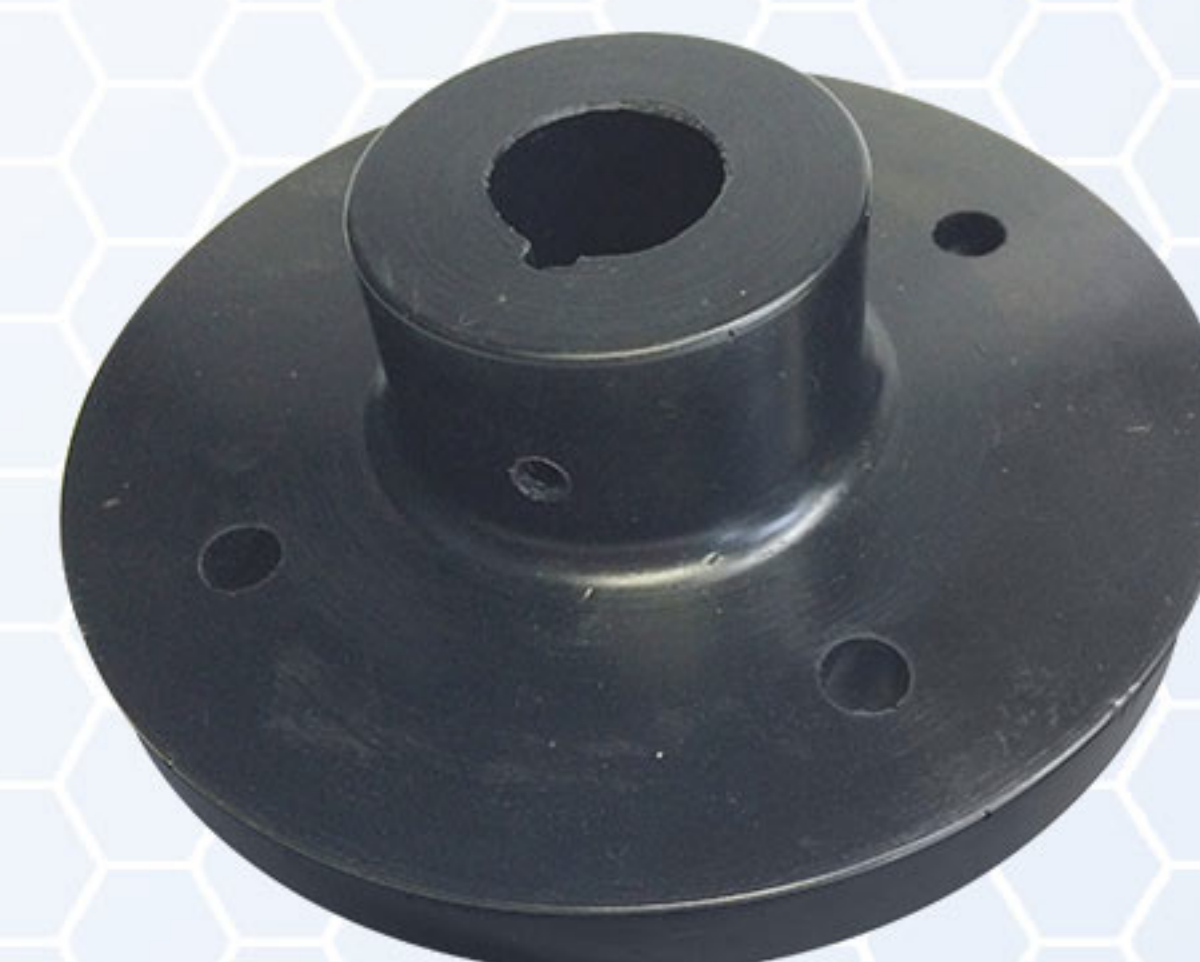
Less Equipment Wear and Operator Fatigue - Due to the higher vibration absorption property of polyurethane.

Polar Edge™ Polyurethane Hub

Corrosion Resistant - Rust, free, will not rust to shaft

Maintenance Free - w/ set screw

High Impact Resistant - Wont break at temperatures as low as -35°F (-37°C)



Benefits of Polyurethane Over Rubber Cutting Edges

Polyurethane has memory and bounces back to retain its original shape after impact. In contrast, rubber tends to hold its flexed shape, severely detrementing plowing efficiency and work life.

