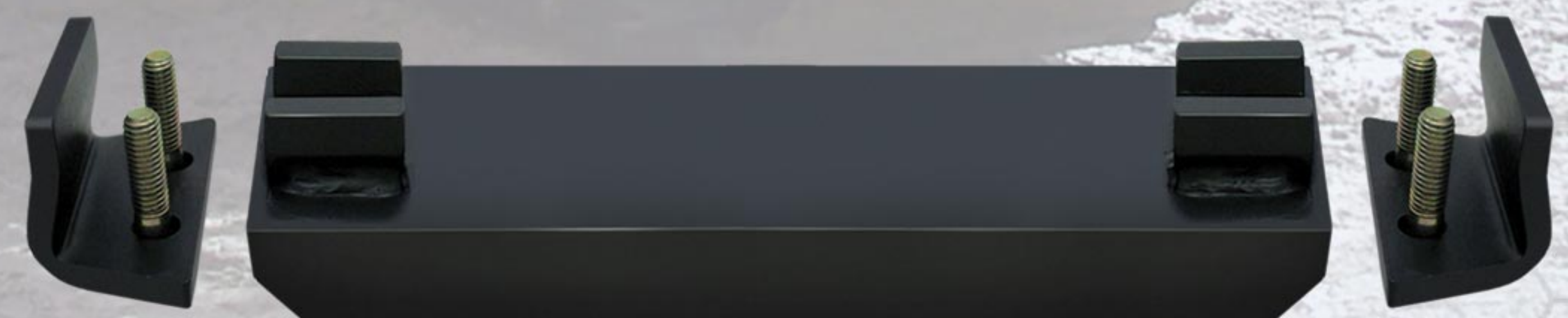
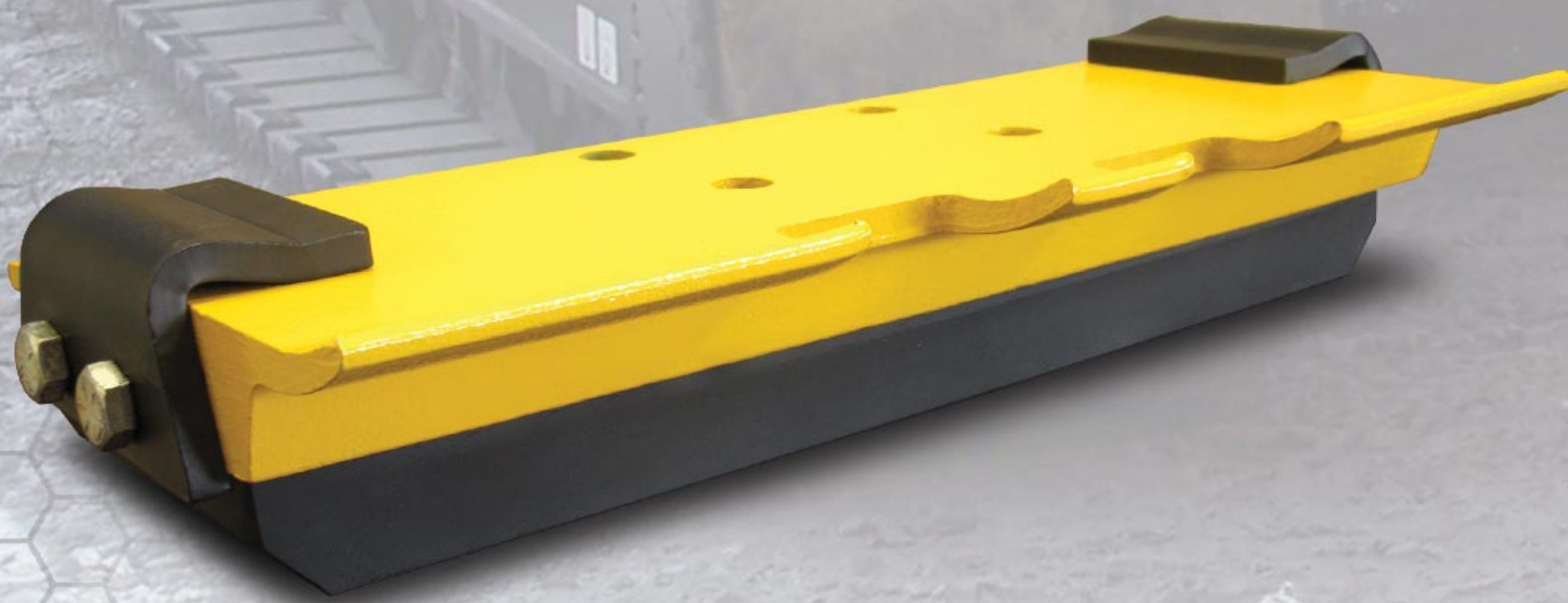


# CUSHOTRAC® Clamp[ON]™

The Universal Quick-Fit Track Pad for Excavators and Cranes

- In Stock, ready for immediate shipping
- Fastest & easiest installation - 2-4 hours for a complete set
- Universal fit - eliminates track modification and drilling holes
- ACS™ secures pad to grouser and prevents loosening
- Available in rubber and polyurethane



Active Clamping System™  
Dual Clamping Mechanism



**SUPERIOR**  
TIRE & RUBBER CORP.  
HEAVY EQUIPMENT COMPONENTS



Management  
Systems  
Registered  
to ISO 9001

**ENGINEERING REVOLUTION™**

©2020 Superior Tire & Rubber Corp. All Rights Reserved.



# CUSHOTRAC® Clamp[ON]™

## The Fastest Solution for Surface Protection in Any Application



**Eliminate Pad Loosening** – ACS™ (Active Clamping System) automatically optimizes clamping force and continuously tightens.

**Ensures 100% work-life with No Bond Failure** - Proprietary Heat Activated Bonding Technology that provides the strongest bond between Poly/Rubber & steel plate, preventing costly premature product failure.

**Application Specific** – Proprietary extended wear-life polyurethane compound or premium high traction rubber compound.

## CUSHOTRAC® Clamp[On]™ Popular Sizes

Standard (in)	Metric (mm)
12"	300mm
15.75"	400mm
17"	450mm
20"	500mm
24"	600mm
28"	700mm
29.5"	750mm
31.5"	800mm
33.5"	850mm
35.5"	900mm

## Applications:

**CUSHOTRAC® Clamp[ON]™ track pads are designed to provide quick & dependable surface protection whether it's required or recommended.**

- Construction
- Demolition
- Crane Operations
- Waste Transfer
- Drilling Sites
- Trenchers

## 100% Worklife Guarantee\*

All CUSHOTRAC® Track Pads are backed by an industry leading 100% Worklife Guarantee\*, providing customers with more savings & quality products.

\*Visit [www.track-pads.com](http://www.track-pads.com) to learn more.

## CUSHOTRAC® Clamp[ON]™ Installation Instructions

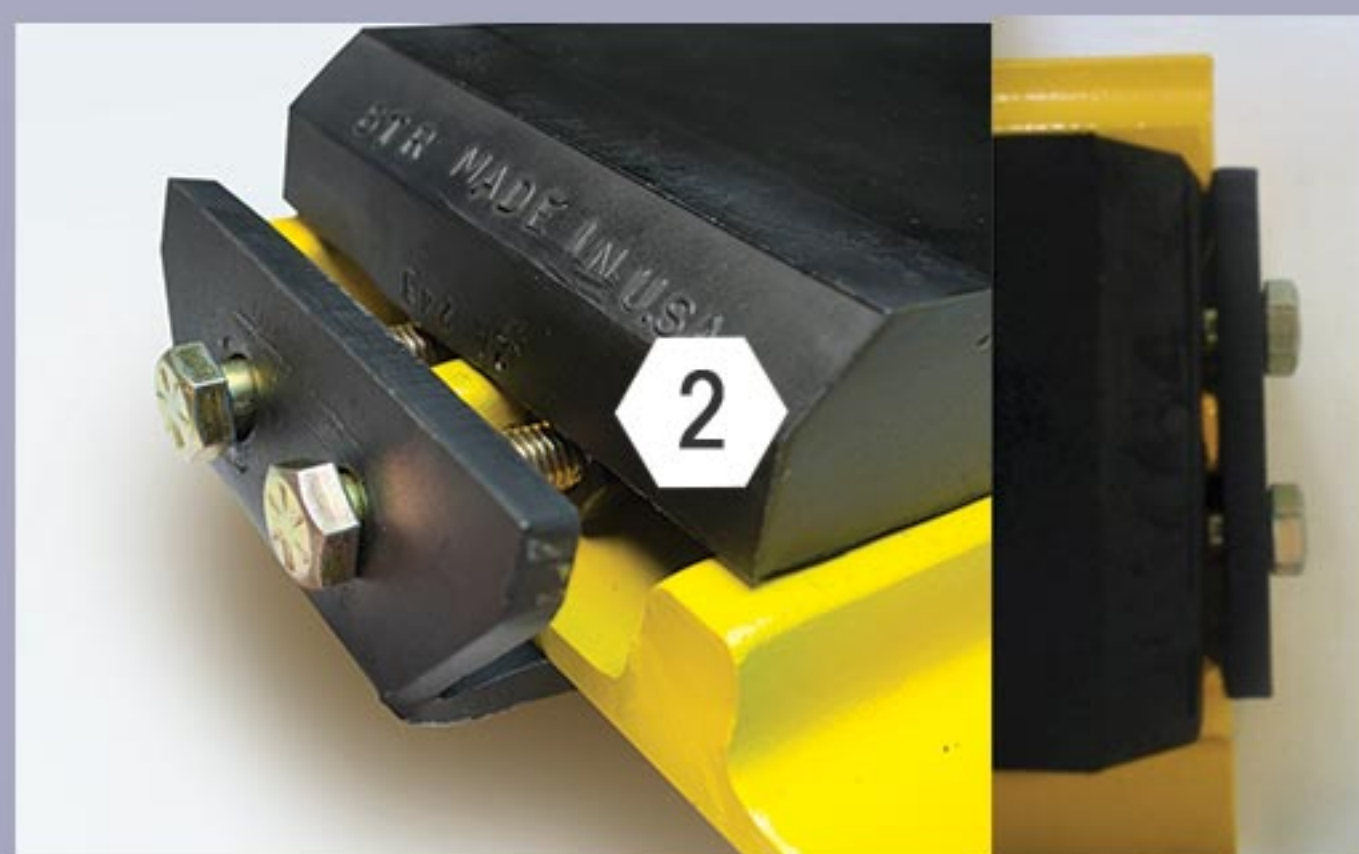
### Step 1.

Completely remove both clamps from the pad. Lay the pad onto the steel shoe ensuring that the coupling nuts sit down in the valleys of the triple bar grouser shoe.



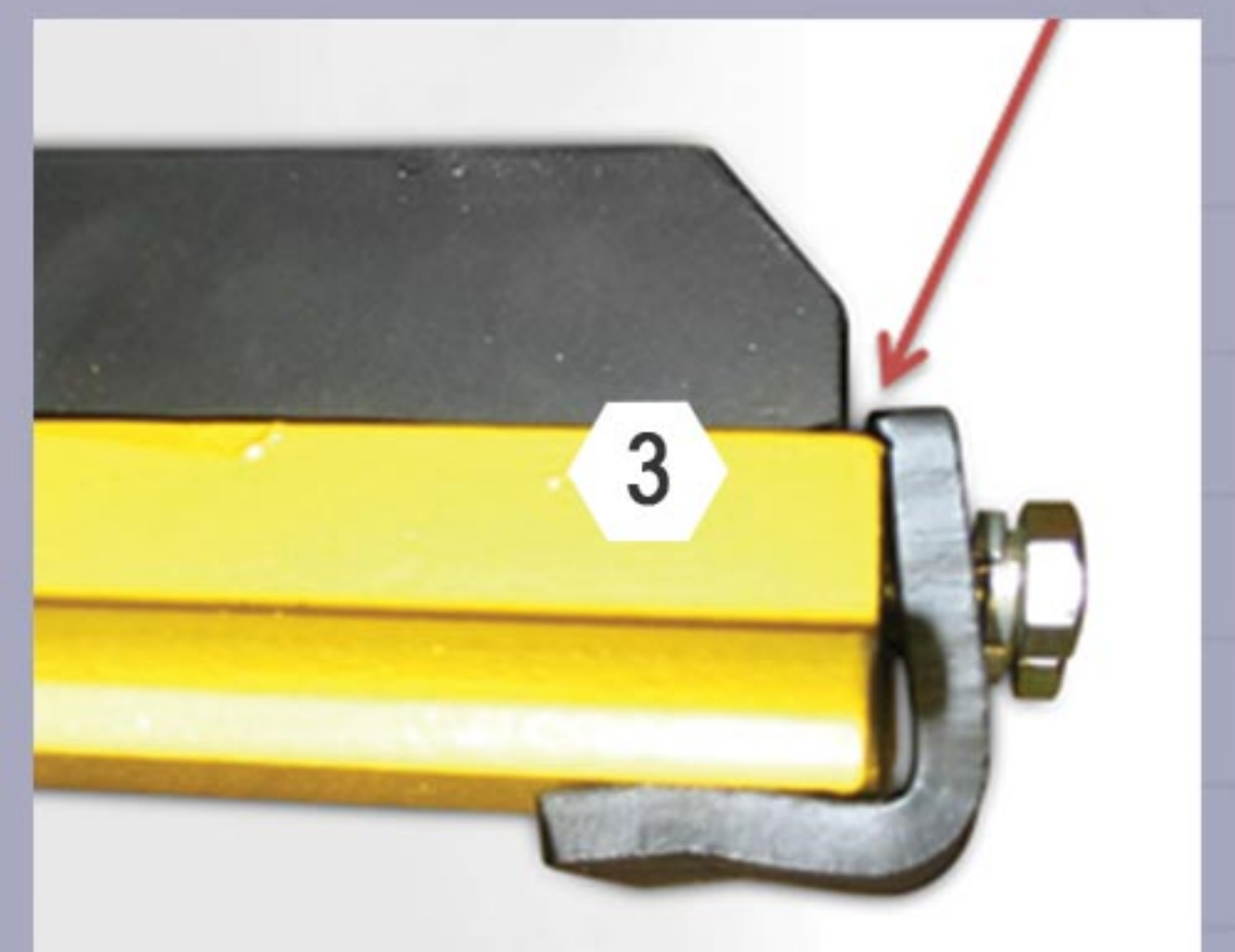
### Step 2.

Attach the removed clips back onto the pad by hand tightening.



### Step 3.

Ensure that the CUSHOTRAC® Clamp[On]™ pad is centered horizontally onto the steel shoe. There should be an even gap on both sides between the pad and the clamp. Steel to steel contact between the clips and the steel grouser shoe is required.



### Step 4.

Using a torque wrench, alternate tightening each bolt to 25-35ft lbs to ensure pad stays centered on the grouser shoe.



40 Scientific Rd. Warren, PA 16365

1.800.289.1456 [www.SuperiorTire.com](http://www.SuperiorTire.com)

