

CUSHOTHANE® XL™

The Heavy Load Specialist

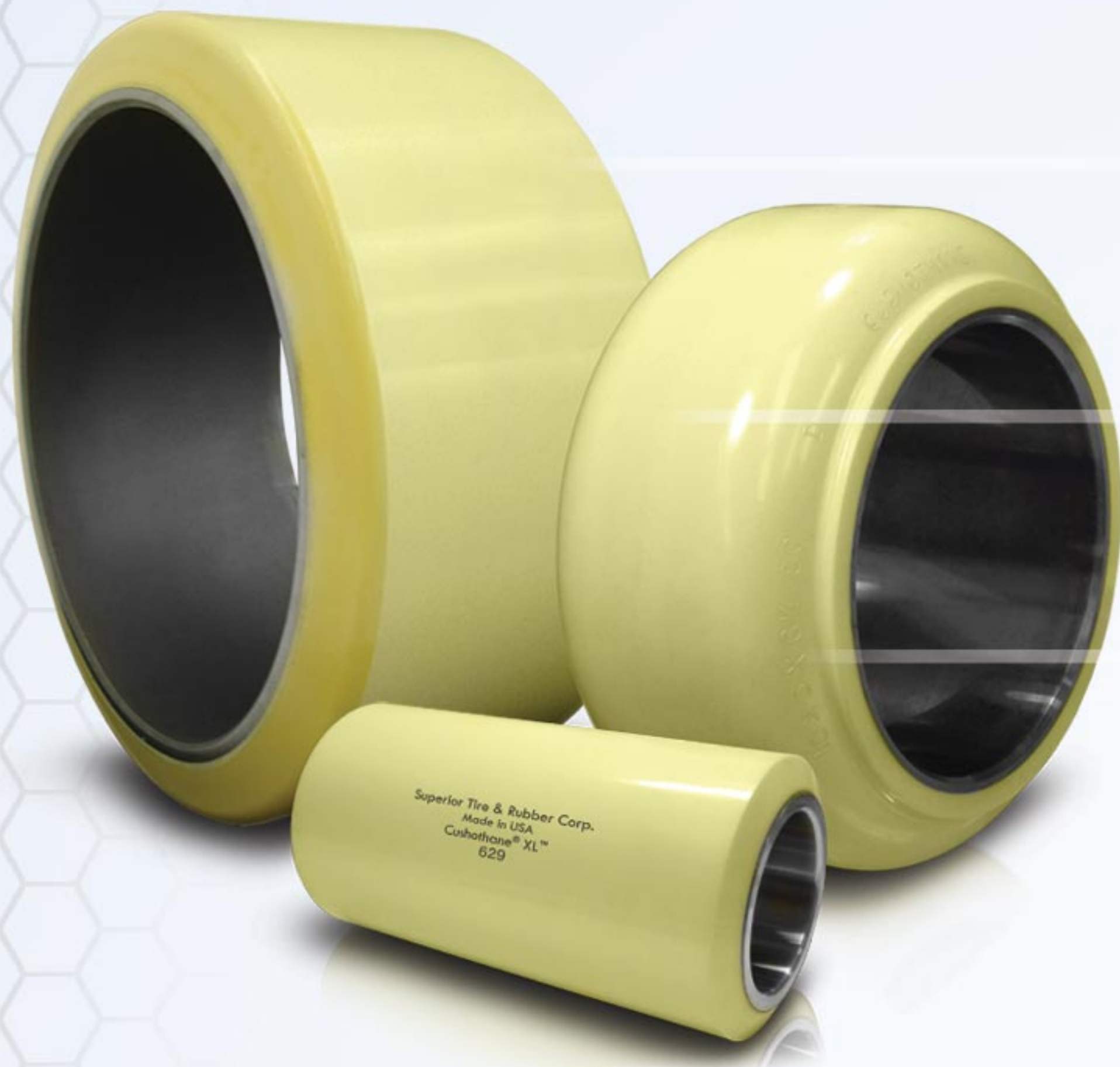
- Designed to handle heavy cargo loads and demanding duty cycles
- Engineered to withstand rough floor conditions
- Cuts down on wheel replacement cycles and downtime due to higher wear resistance
- 2 Application Specific Compounds for Tires and Load Wheels

CUSHOTHANE® XL™

Applications

- Commonly found when load wheels & Class III tires are subjected to the trucks maximum load rating for a prolonged period of time.

The Industry Reference Problem Solver



Heaviest Load Capacity -

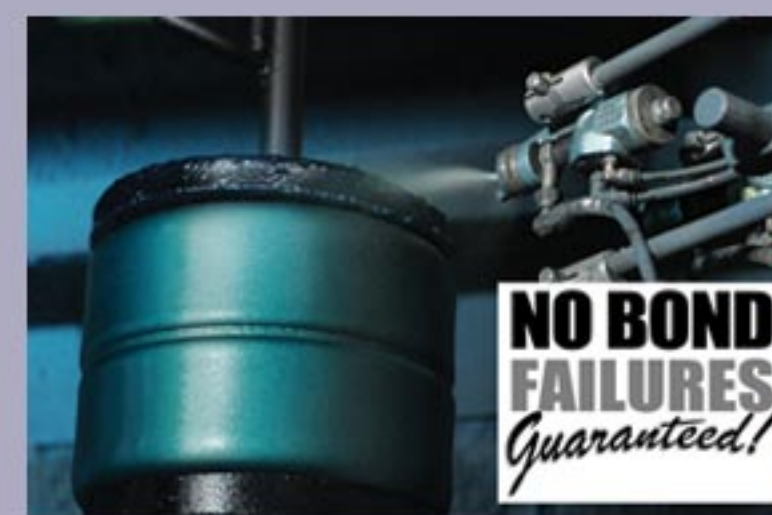
from legendary American polyurethane technology and revolutionary XL3™ bonding technology

Defies the Worst Surface Conditions -

from the toughest polyurethane compound with the highest cut & tear resistance

No Bond Failures Guaranteed†

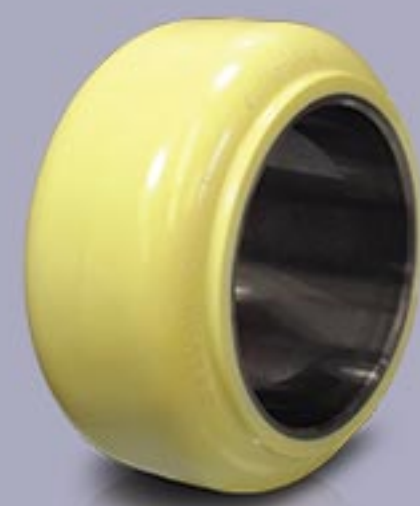
Proprietary XL3™ bonding agent and special steel surface finishing creates a bond that resists heat and shear force.



2 Specific Compounds for Press-On Tires & Load Wheels

Cushothane® XL™ Press-On Tires

- 93A Durometer
- Higher Traction Compound
- Shorter Braking Distance
- Highest Cut & Tear Resistance
- One of the highest wear resistant compounds in the market.



Cushothane® XL™ Load Wheels -

- 97A Durometer
- Highest Load Capacity Compound
- Highest Duty Cycle Tolerance
- XL3™ Bonding - No Bond Failures Guaranteed†



Cushothane® XL™ vs. Competition



Reduced downtime from fewer replacements & no surprise bond failure

Longer lasting from higher wear resistance*



Proven higher load capacity

*Tested with ASTM D5963 / ISO 4649 standard. Cushothane® XL™ tires have up to 305% higher wear resistance than a major US competitor's standard compound and 47% higher than a major US competitor's high load compound.

Customer Reviews

I was experiencing repeat bond failures at one of my customers - a large food distribution center. I had tried many different products and found nothing would meet my customer's work-life expectations. Superior Tire took the time to meet with my customer and identify a solution - the Cushothane® XL™ compound. Since using the Cushothane® XL™, my customer has been extremely happy. They no longer have to spend extra time and money on maintenance and new wheels from premature bond failures. They were so impressed with the work-life that I have now made this the "compound of choice" at other customer locations. **With the Cushothane® XL™, know that my customers are guaranteed to have no bond failures.**

Tommy Bush
Tommy Bush,
TruPar

†Refer to terms and conditions at www.SuperiorTire.com

Tires

CL-I CL-II CL-III



Load wheels

CL-II CL-III



Superior Select™

(Ships Same or Next Business Day)

| OEM | OEM Part # | Dimensions |
|--------------|-------------|------------|
| HYG® | 524148750 | 3.25x4.5 |
| UniCarriers® | 40310-fs001 | 3.25x5.984 |
| UniCarriers® | 40350-fs001 | 3.25x5.984 |
| Clark® | 2831157 | 5x3.758 |
| HYG® | 580022365 | 4x2.875 |
| HYG® | 1541298 | 5x3.87 |
| Raymond® | L152681D | 3.25x6.375 |
| Raymond® | 632-069 | 3.25x5.937 |
| Raymond® | 632-069 | 3.25x5.937 |
| Raymond® | 632-052 | 5x3.625 |
| HYG® | 4133953 | 5x2.88 |
| HYG® | 524140951 | 3.25x6.5 |
| Crown® | 77086 | 3.25x5 |
| Crown® | 100462 | 3.25x6.5 |
| Crown® | 100462 | 3.25x6.5 |
| Crown® | 83179 | 4x2.5 |
| Crown® | 115032 | 5x2.875 |
| Crown® | 115033 | 5x4.125 |
| Raymond® | 671-041 | 3x3.5 |

Triple Wheel Assemblies

- Designed to reduce coning & skidding effect in cornering
- Longer wear-life and higher maneuverability
- Heavy load capacity and duty cycle
- Matched wheel O.D. at less than 0.005" run-out



MADE IN USA



Management
Systems
Registered
to ISO 9001

40 Scientific Rd., Warren, PA 16365

1.800.289.1456 www.SuperiorTire.com

SUPERIOR
TIRE & RUBBER CORP.
MATERIAL HANDLING COMPONENTS