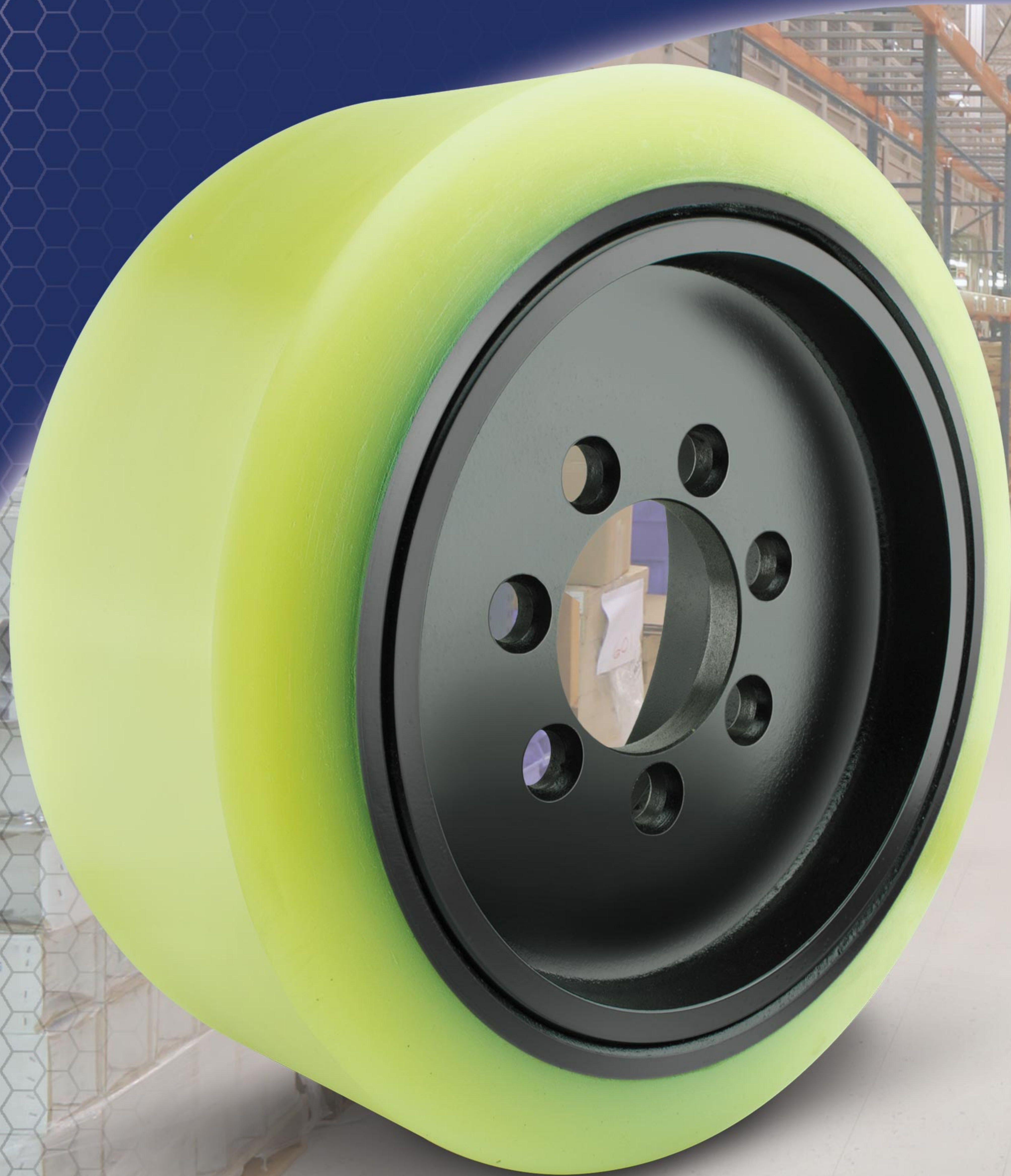


CUSHOTHANE® XL-AC™

Runs Cooler, Carries More™



- Engineered specifically for AC-powered trucks
- Highest dynamic load capacity at high speeds
- Low rolling resistance to extend battery life
- Backed by the industry's only *No Bond Failure Guarantee**
- SuperSmooth™ tread comes standard to significantly increase performance



SUPERIOR
TIRE & RUBBER CORP.
MATERIAL HANDLING COMPONENTS



Management
Systems
Registered
to ISO 9001
Quality
ISO 9001

ENGINEERING REVOLUTION™

© 2020 Superior Tire & Rubber Corp. All Rights Reserved.

CUSHOTHANE® XL-AC™

Application

Some trucks designs have a teeter-totter effect when the truck runs empty. Without counterbalancing cargo, the truck is able to reach maximum speed meanwhile placing the highest weight loading on the drive tire.

The Heavy Duty - Long Run Specialist



Engineered for AC-Powered Trucks -
Energy efficient compound provides easier rolling, capturing the full performance of the AC-motor and extending battery life

No Bond Failure Guaranteed

With state-of-the-art XL3™ bonding technology, Superior Tire & Rubber Corp. offers the industry's only No Bond Failure Guarantee* to further reassure the ultimate performance claim in the Cushothane® XL-AC™

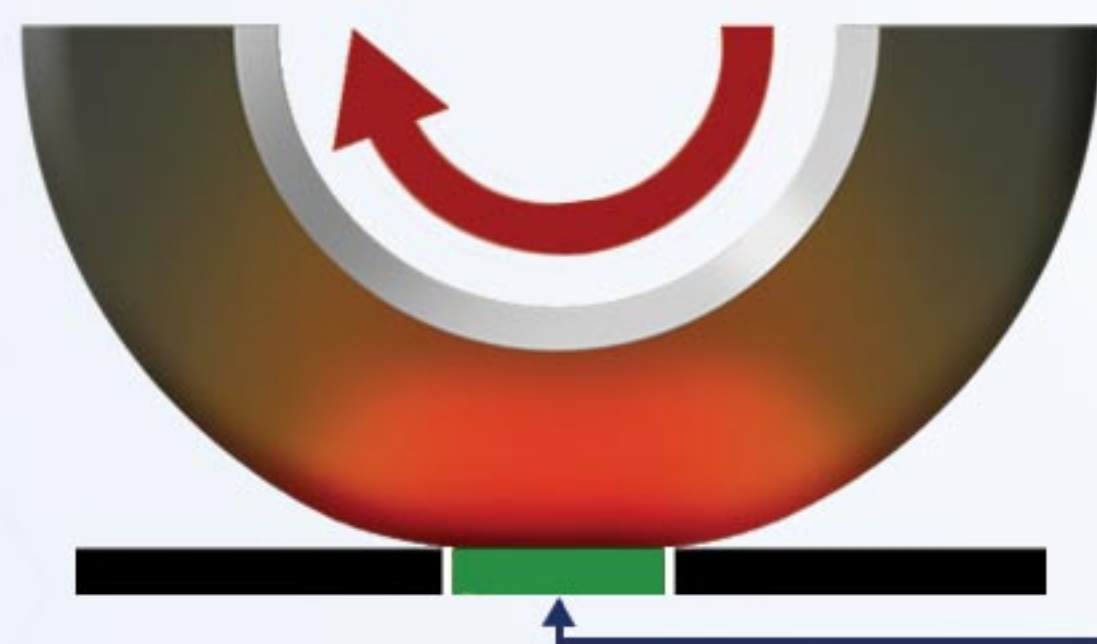


SuperSmooth™ Tread Comes Standard

The SuperSmooth™ tread feature comes standard for all Cushothane® XL-AC™ press-on tires with only 0.015" total indicated run-out. SuperSmooth™ offers greater stability & cooler operating temperatures - providing the operator with a smoother ride and prolonged wheel work-life. This feature is also available as an option for other Cushothane® press-on tires.

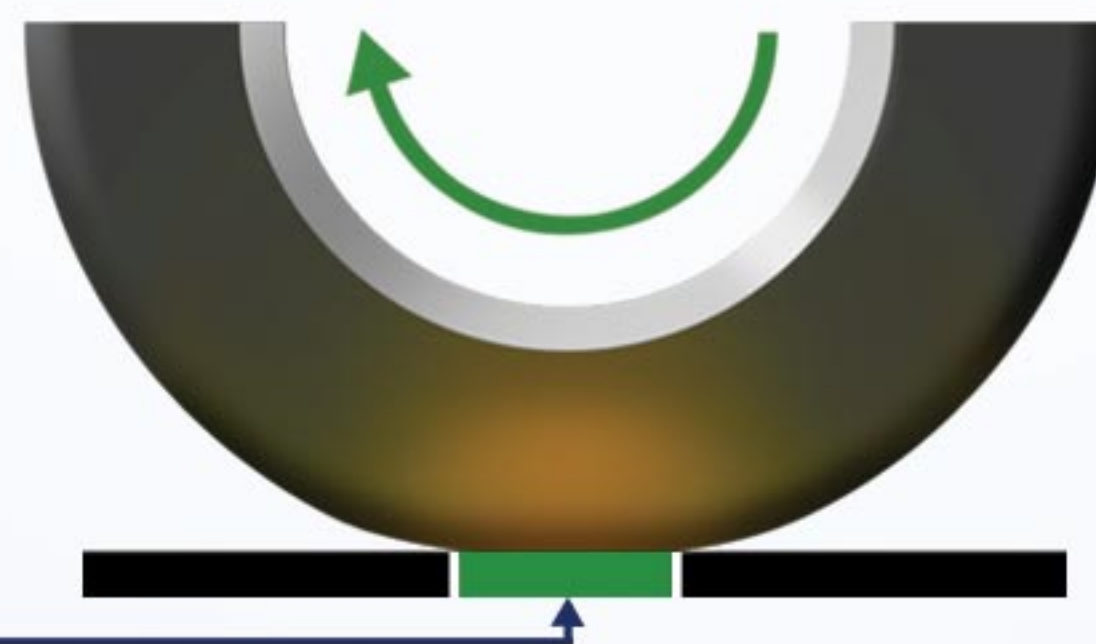
Energy Efficient Polyurethane Compound

- More energy lost to roll the tire
- Higher internal temperature



Common heavy load compound

- Less energy lost to roll the tire
- Lower internal temperature



Cushothane® XL-AC™ compound

The Cushothane® XL-AC™ is an energy efficient compound that reduces energy lost from tire deflection in the grip generating (contact patch) area. The lower energy loss creates less heat (cooler running tire) that will reduce the chance of meltdown and bond failure and extend usage life. In addition, the tire is also easier to roll and therefore drains less battery power and captures more of the AC-motor performance.

Site Proven, Customer Preferred

"We changed our traffic pattern so that the reach trucks were traveling the entire length of the facility. The OEM tires were melting down extremely quickly - aftermarket tires worked no better. Our local dealer put the cooler running Cushothane® XL-AC™ tires on the trucks and the meltdown problem simply went away."

- Florida Food Distribution Center,
Equipment Manager

*Refer to terms and conditions at www.SuperiorTire.com

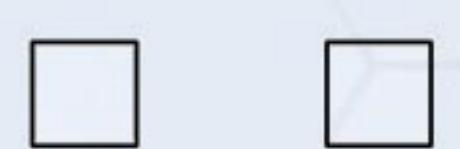
Tires

CL-I CL-II CL-III



Load wheels

CL-II CL-III



Superior Select™

CUSHOTHANE® XL-AC™

(Ships Same or Next Business Day)

OEM	OEM Part #	Dimensions
Crown®	121501	13x5.5x9.5 TSW-SS

Makes and Models:

Rider Pallet Truck

Crown®	PE, PC, PR	13 x 4.5 x 8
Clark®	HWX	10 x 4.75 x 6.5
Hyster®	B80ZHD, C80Z	12 x 4.5 x 8
Jungheinrich®	ERC	12 x 5 x 8
Nissan®	RPX	10 x 5 x 6.5
Raymond®	8000, 8500	12 x 4.5 x 8
Yale®	MPE, MPC080VG	12 x 4.5 x 8

Reach/Order-Picker Truck Tires

Crown®	RR, RD, RM	13.5 x 5.5 x 9.5
Crown®	SP	13 x 5.5 x 8
Hyster®	N Series	12 x 5.5 x 8
Hyster®	N, R Series	13.5 x 5.5 x 8
Jungheinrich®	ETR	13.5 x 5.5 x 10
Nissan®	SRX	13 x 5.5 x 10
Raymond®	5000 Series	12 x 5 x 9
Raymond®	5000, 7000 Series	13.5 x 6 x 10.5
Yale®	NR, NDR Series	12 x 5.5 x 8
Yale®	NR, NDR, OS, SS, FS Series	13.5 x 5.5 x 8

Choosing the Right Compound for the Application

	Cushothane® XL™	Cushothane® XL-AC™
High Speed Application	●●●○	●●●●
Heavy Load Application	●●●●	●●●○
Cooler/Longer Running	●●○○	●●●●
Rough Surfaces	●●●●	●●●○

Available in Mold-On and Press-Fit

Call for available sizes

All manufacturers' names, numbers, symbols and descriptions are for reference only. It is not implied that any part is the product of the manufacturer. CLARK® is a registered trademark of Clark Material Handling Company. CROWN® is a registered trademark of Crown Equipment Corporation. YALE® is a registered trademark of Hyster-Yale Materials Handling, Inc. HYSTER® is a registered trademark of Hyster-Yale Materials Handling, Inc. RAYMOND® is a registered trademark of The Raymond Corporation. NISSAN® is a registered trademark of UniCarriers Corporation. JUNHEINRICH® is a registered trademark of The Jungheinrich Corporation.



40 Scientific Rd., Warren, PA 16365
1.800.289.1456 www.SuperiorTire.com

