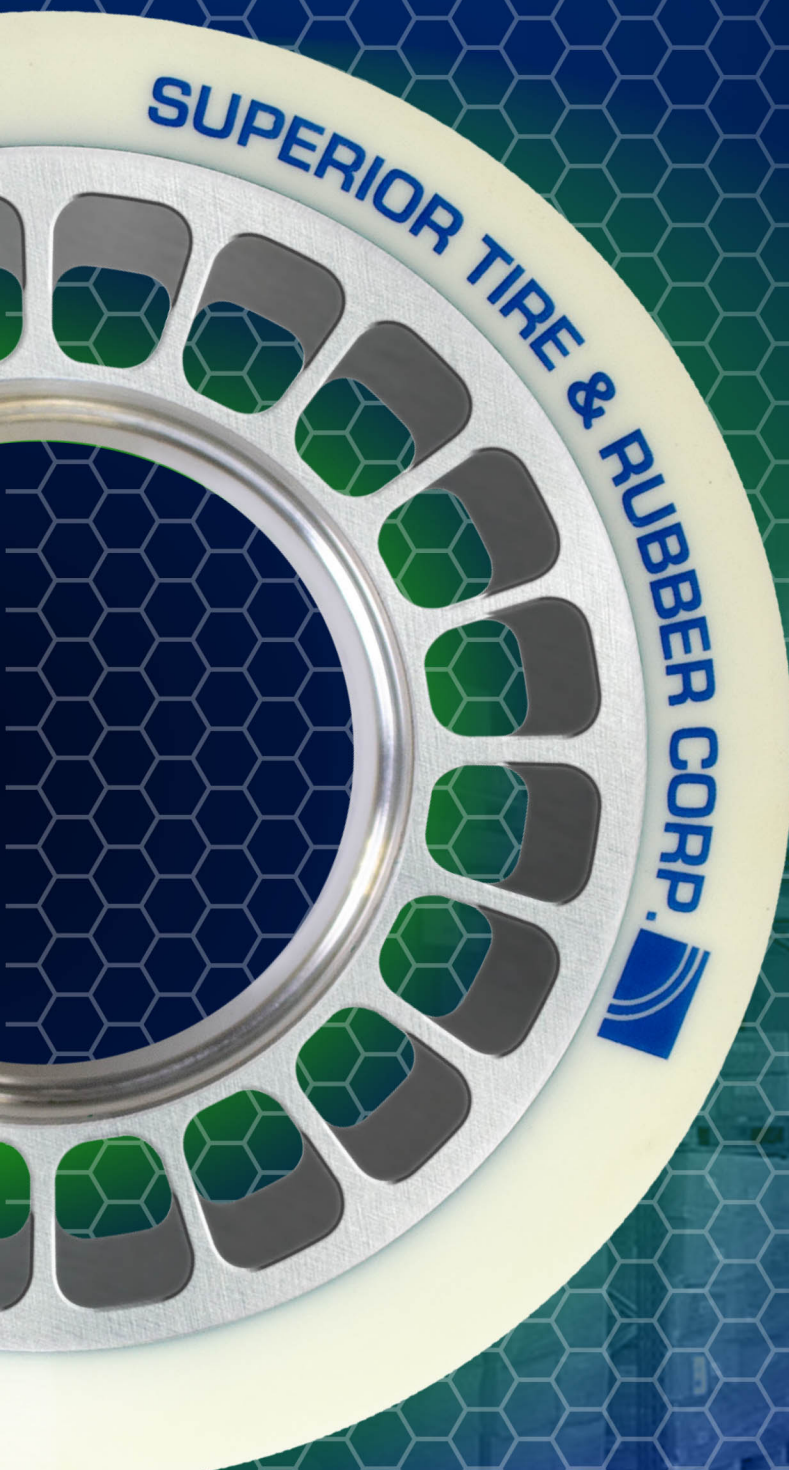


Patent Pending

VELOCITY™

The Next Generation of Revolution



- *HeatSink™ hub design rapidly cools the wheel, preventing material failure.*
- *70% Lighter than traditional solid steel load wheels reducing maintenance burden and shipping costs*
- *Up to 2x longer wheel work-life vs. traditional solid steel hub wheels*
- *Reduces wheel binding from shrink wrap and other debris*
- *No Bond Separation Guarantee**

Velocity™ wheels are only available with the legendary Cushothane® XL™ compound.

SUPERIOR
TIRE & RUBBER CORP.
ENGINEERING REVOLUTION™



40 Scientific Rd., Warren, PA 16365

1.800.289.1456 www.SuperiorTire.com

Superior Tire & Rubber Corp.'s team of engineers have developed a revolutionary load wheel design that will change the industry. The patent pending Velocity™ wheel significantly reduces weight and can extend wheel work-life by up to 100%. The Velocity™ wheel saves customers money through lower shipping charges, reducing replacement cycles and maintenance burden.

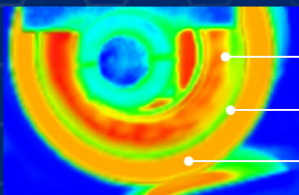


Strength Test

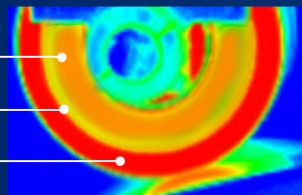
Wheel shown without bearings. Velocity™ wheels cannot be ordered without bearings factory pressed. Image is for representation purpose only.

HeatSink™ Technology

The Velocity™ hub rapidly dissipates heat through the vents and away from the bond and material. Max operating temperature is reduced by up to **10%**, preserving the bond and material. The Velocity™ hub also returns to room temperature in roughly 40 mins eliminating flat spotting while equipment is at rest.



Velocity™



Traditional Steel

Site Proven Performance

"We run a 24/7 operation in a 900K sq ft facility and these Velocity™ wheels have more than doubled our work life!"

Juan A. - Sherwin Williams
Romeoville, IL

Factory Pressed Bearings

Shielded

Sealed



Velocity™ wheels come direct from us with bearings pre-pressed only. This not only saves the customer time with a drop-in ready wheel, it also eliminates installation burden. Bearing configuration indicated by -A1 or -A2.

Available for Most Popular 5" OD CL-II Brands

OEM	OEM Part#	STR Part#	Width
Raymond®	632-052	V500654	3.625"
	632-043	V500653	2.875"
Crown®	115032	V509150	2.875"
	115033	V509157	4.125"
Hyster®	8521512	V500458	3.875"
	8521511	V500878	2.875"
Yale®	524196822	V500458	3.875"
	580046742	V500878	2.875"
Mitsubishi Logisnext®	97H3506700	V500654	3.625"
	97H3509200	V500653	2.875"
Toyota®	00590-53472-71	V500653	2.875"
	00590-53455-71	V500654	3.625"



Velocity™ wheels come with our Legendary XL3™ bonding technology.*

*Refer to Terms & Conditions at www.superiortire.com