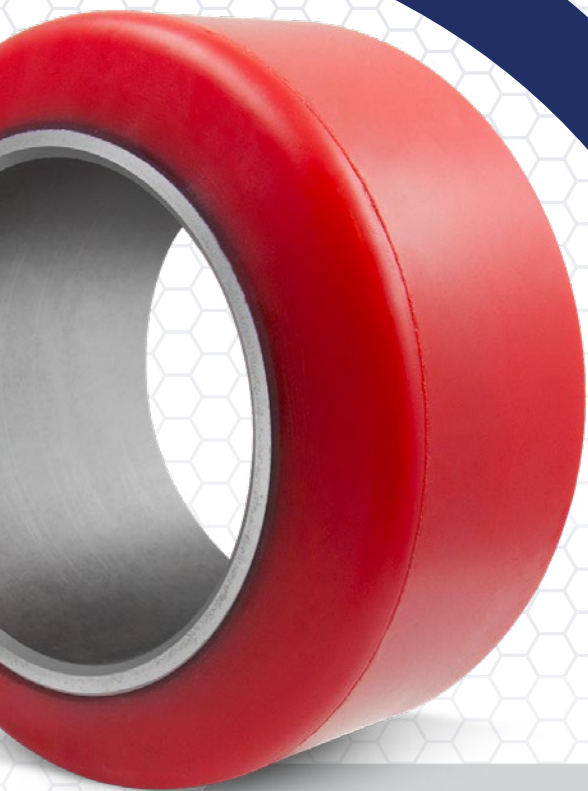


CUSHOTHANE®

EZ™

TIRES



**THE GENERAL USE &
COLD STORAGE SPECIALIST**

SUPERIOR 
TIRE & RUBBER CORP.
ENGINEERING REVOLUTION™


MADE IN USA


ISO
9001
2015

1.800.289.1456 | www.SuperiorTire.com

CUSHOTHANE® EZ™

The Cushothane® EZ™ polyurethane press-on and mold-on tires for indoor forklifts and pallet jacks is one of the most universal compounds for most equipment. The Cushothane® EZ™ is engineered with our softest available compound for added comfort, exceptional traction, and long wear-life that's more affordable than specialized compounds.

RECOMMENDED FOR: 



PERFORMANCE:



THE SOLUTION FOR:



CHUNKING



FLAT-SPOTTING



LOSS OF TRACTION

AVAILABLE FOR:

- Toyota / Raymond
- Hyster-Yale
- Crown
- Jungheinrich
- UniCarriers / Mitsubishi Logisnext
- ...and More!



Learn more about the Cushothane® EZ™ at www.superiortire.com — scan this code for sizing, options, specs, and more.

SUPERIOR
TIRE & RUBBER CORP.
ENGINEERING REVOLUTION™



1.800.289.1456 | www.SuperiorTire.com