

CUSHOMATIC™

Heavy Duty
SOLID
Skid-Steer Tires



**ENGINEERED FOR THE
TOUGHEST APPLICATIONS.**

- Longest Wear-Life in the Industry
- Tear Resistance in Abusive Applications
- Ultra-High Traction on All Surfaces
- Full Size Construction

1.800.289.1456 | www.SuperiorTire.com

SUPERIOR
TIRE & RUBBER CORP.
ENGINEERING REVOLUTION™



Management
Systems
Registered
to ISO 9001

100% SOLID NATURAL RUBBER

What do we mean by that? We mean the whole thing is pure, solid natural rubber. Not synthetic rubber. Not some shredded recycled rubber or some other rubber-ish substitute that technically counts as rubber. There's no air holes to make them cheaper and lighter. Not these tires. They are heavy, tough and solid. Just the way they should be.

SIZING SPECIFICATIONS

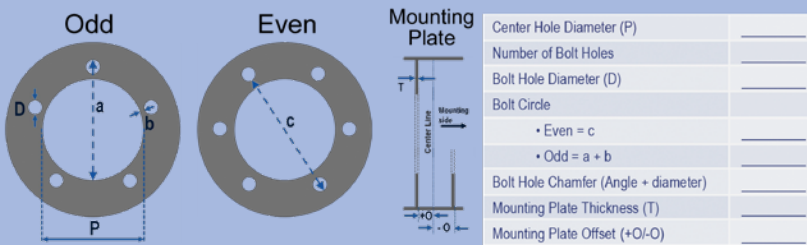
Pneumatic Size	Wheel Config.	Dimensions	Tread Profile	Rubber Thickness	STR Part#	Tread 32 ^{nds}
23 x 8.5 x 12	Specialty	23" x 7"	Lug	5"	w065122	48
27x10.5-15	6 hole	28" x 7"	Lug	6"	w070503	58
10-16.5	8 on 8	31.5" x 7"	Lug	5"	w075618	77
12-16.5	8 on 8	33" x 8.5"	Lug	6"	w081556	80
12-16.5	8 on 8	33" x 9"	Smooth	6"	w081556-9	96
12-16.5	8 on 8	33" x 10"	Smooth	6"	w081556-10	96
12-16.5	8 on 10.75	33" x 8.5"	Lug	6"	w081591	80
12-16.5	8 on 8	33" x 9"	Smooth	6"	w081591-9	96
12-16.5	8 on 8	33" x 10"	Smooth	6"	w081591-10	96
14 x 17.5	8 on 8	36" x 9"	Smooth	7"	w091503-9	147
14 x 17.5	10.75 on 8	36" x 9"	Smooth	7"	W091507-9	147

AVAILABLE FOR MOST MAKES & MODELS OF SKID STEERS

Call 1.800.289.1456 for help cross referencing your make & model. We also have cross referencing for Counter Balance Forklifts.

FACTORY CUSTOMIZED BOLT PATTERNS

We offer both OEM bolt patterns and customized bolt patterns. In addition to size, the truck version or bolt pattern information is required to ensure the best fit.



1.800.289.1456 | www.SuperiorTire.com



40 Scientific Road
Warren, PA 16365



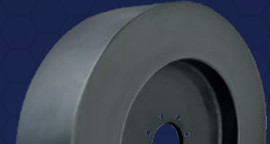
AVAILABLE TREADS

LUGGED



- Provides a softer, more cushioned ride on rougher surfaces. Slight increase to traction on debris covered surfaces. Do not use on loose or wet ground.

SMOOTH



- Provides the highest amount of traction on smooth surfaces such as concrete or asphalt. Do not use on loose or wet ground.

RECOMMEND FOR

No two jobs are the same, which is why we tested the CUSHOMATIC™ in a multiple locations per application. Our customers agree, CUSHOMATIC™ tires are the best option for these applications:

- Waste Transfer Stations
- Recycling Plants
- Scrap Yards
- Steel Mills
- Construction & Highway

100% Work-Life Guarantee*

All CUSHOMATIC™ Tires are backed by an industry leading 100% Work-Life Guarantee, to ensure you're getting the most cost saving advantages.



*Refer to terms and conditions at www.superiortire.com.