



Date: \_\_\_\_\_ **Attention:** \_\_\_\_\_  
 Jeff Gustafson  
 1818 Pennsylvania Ave. West  
 P.O. Box 308  
 Warren, PA 16365  
 Tel: 1-814-723-2370 x173  
 Fax: 1-814-726-0740  
 E-mail: [jgustafson@superiortire.com](mailto:jgustafson@superiortire.com)  
 Website: [www.superiortire.com](http://www.superiortire.com)

## BOLT-TO-SHOE PADS FOR SINGLE BAR SHOES

Machine Mfg \_\_\_\_\_ Model # \_\_\_\_\_

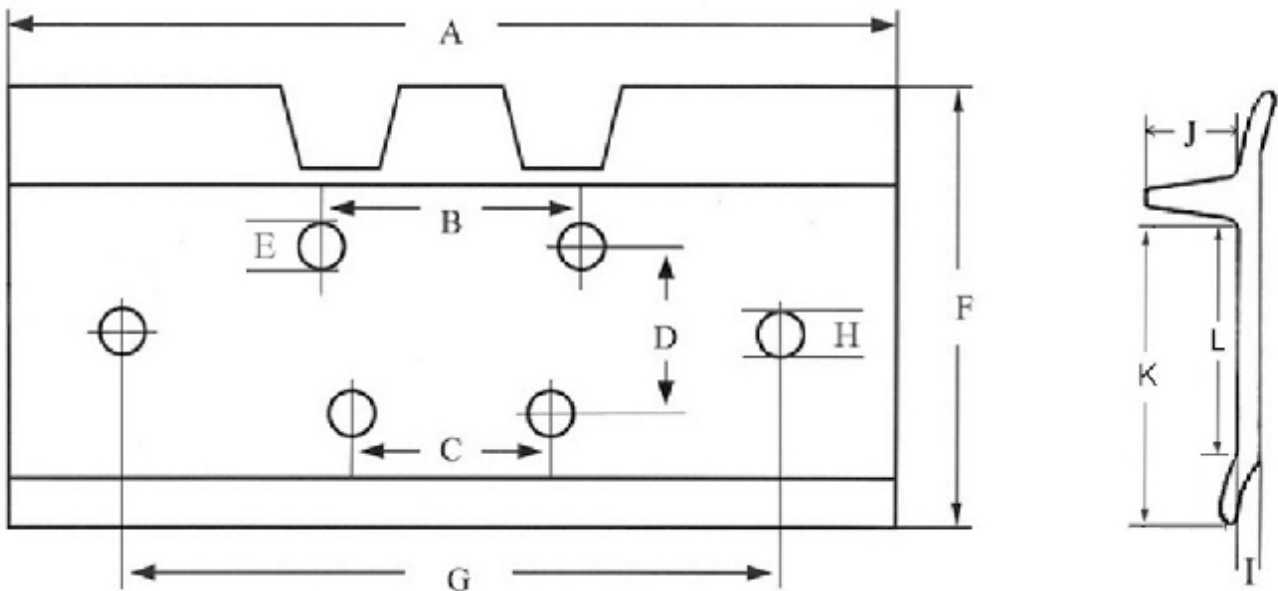
OEM Shoe Part # \_\_\_\_\_ Master Links: Yes/No (circle)

Mounting Design: Bolt To Shoe Number of Bars: 1

Grouser Shoe & Pad Dimensions (please fill in all dimensions)

ShoeWidth: A \_\_\_\_\_  
 Shoe Bolt Pattern To Link: B \_\_\_\_\_  
 C \_\_\_\_\_  
 D \_\_\_\_\_  
 Shoe Bolt-Hole ID: E \_\_\_\_\_  
 Length: F \_\_\_\_\_  
 Bolt Pattern To Pad: G \_\_\_\_\_

Pad Bolt Size: H \_\_\_\_\_  
 Grouse Plate Thickness: I \_\_\_\_\_  
 Grouser Bar Height: J \_\_\_\_\_  
 Grouser shoe Width from bar: K \_\_\_\_\_  
 Grouser flat from bar: L \_\_\_\_\_



Compound: Rubber \_\_\_\_\_, Rubber w/wire \_\_\_\_\_, Poly (95A) \_\_\_\_\_, Soft Poly (85A) \_\_\_\_\_  
 Quantity Required \_\_\_\_\_ Tel: \_\_\_\_\_ Fax: \_\_\_\_\_  
 Name \_\_\_\_\_ Acct. Rec. Name \_\_\_\_\_  
 Company Name \_\_\_\_\_ E-mail: \_\_\_\_\_  
 Mailing Address \_\_\_\_\_  
 Shipping Address \_\_\_\_\_