

CUSHOTRAC® ULTIMATE™

Track Pads Engineered Specifically for Milling Machines



Product information is embossed on the reverse side of every track pad.

2,000 Hrs

The **ONLY** Track Pad With a **2,000 Hour Guarantee***.

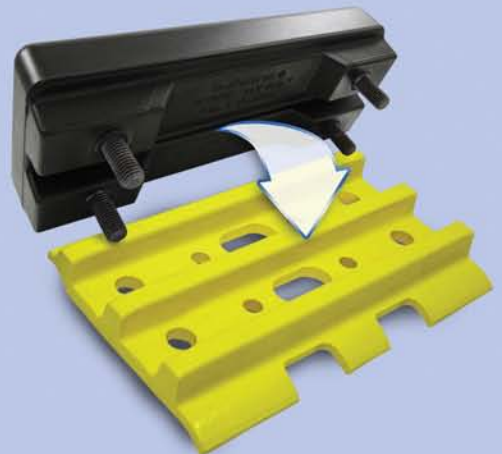
Some famous statements are written in stone, our's is right on the pad. Introducing the next revolution in pads, the Cushotrac® Ultimate™ Track Pad.



Every Contractor Knows...

A longer lasting product means more productivity and more productivity means more money in your pocket. With the Cushotrac® Ultimate™ Track Pad, you will benefit from lower life-cycle cost from our guaranteed 2,000 hour wear life*. Moreover, the Cushotrac® Ultimate™ can be bolted up with existing drilled grouser shoes available in the market.

*Refer to terms and conditions at www.track-pads.com



www.track-pads.com

1818 Penn. Ave. West, Warren, PA 16365

www.superiortire.com 1.800.289.1456

CUSHOTRAC® ULTIMATE™

Track Pads Engineered Specifically for Milling Machines



How to register for your Cushotrac® ULTIMATE™ 2,000 Hour Wear-Life Warranty.

...It's as easy as 1, 2, 3!

1. Install your Cushotrac® ULTIMATE™ Track Pads
2. Go online to www.track-pads.com and find the "Warranty Registration" tab
3. Fill out the required information and submit

A Cushotrac® ULTIMATE™ Track Pad Warranty Card is included with the Packing Slip. For registration assistance, contact your Superior Tire & Rubber Corp. representative.

Make/Model Reference

Most popular models listed.
Call 1.800.289.1456 for more information.

MAKE	MODEL	ITEM#	
BOMAG	BM 1000, BM 1300	1010507UL	
	BM 2000	1012066UL	
CAT	PM 201	1012066UL	
	PR 450	1012066UL	
	PR 500, PM 565	1014063UL	
	PR 1000	1018100UL	
CMI/TEREX	PR 450	1012066UL	
	PR 500	1014063UL	
	PR 525-7	1012066UL	
		1014063UL	
		1014063UL	
	PR 600	1014063UL	
	PR 650	1014063UL	
	PR 800-7	1014063UL	
1018100UL			
PR 950	1014063UL		
PR 1050	1014063UL		
DYNAPAC	PL2000	1012066UL	
MARINI	1300, 2000	1010507UL	
	2100	1012066UL	
ROADTEC	RX25, RX40, RX45	1014063UL	
		1016041UL	
	RX50, RX50, RX50B, RX60, RX60C, RX68, RX70, RX120	1016041UL	
	RX400	1010507UL	
	RX500	1012066UL	
		1014100UL	
	RX700	1014063UL	
		1016041UL	
RX900	1014063UL		
	1016041UL		
WIRTGEN	W1000F, W1200F, W1300F, W100F, W120F, W130F, W1300, W1500, W1900, W2000DC	1010507UL	
	2000	1012066UL	
	2100, 2100VC, 2100DC	1014063UL	
	2200	1014063UL	
	VOLVO	MT2000	1012066UL
		MT2200	1014063UL

All manufacturers' names, numbers, symbols and descriptions are for reference purpose only. It is not implied that any part is the product of the manufacturer.

The screenshot shows the Superior Tire & Rubber Corp. website. The main heading is 'Cushotrac® Track Pads'. Below the heading, there is a 'Links' section with three items: 'Track Show Schedule', 'Track Pad Brochures', and 'Testimonials'. A circular callout with a mouse cursor points to the 'Warranty Registration' link. The page also includes a 'Key Benefits' section with a list of features and a 'Please Specify, When Ordering' section with a list of options.



www.track-pads.com

1818 Penn. Ave. West, Warren, PA 16365

1.800.289.1456 www.superiortire.com