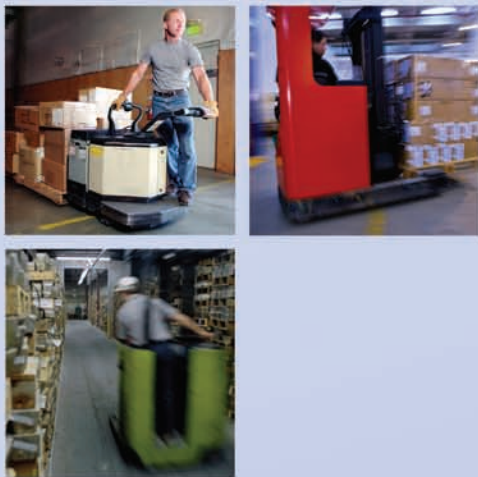


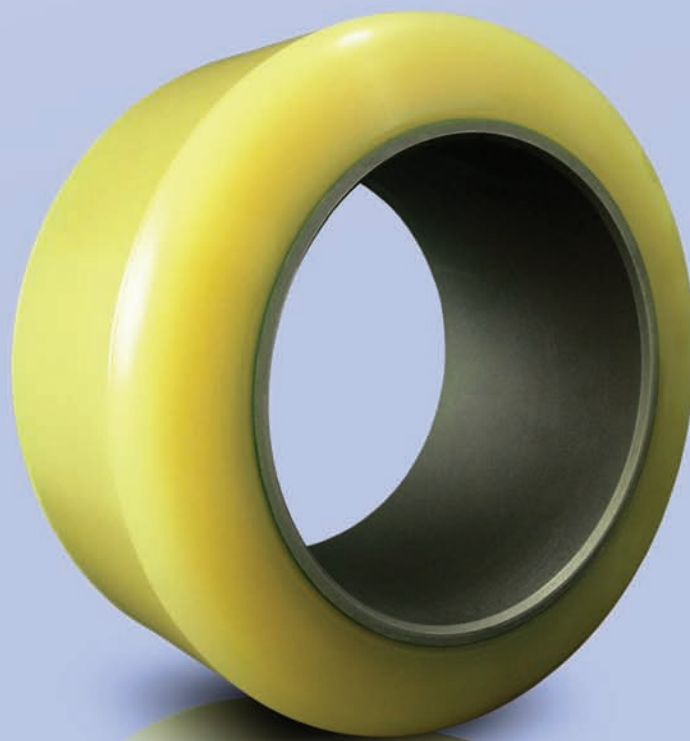
Cushothane® XL-AC™

Runs Cooler, Carries More™



Engineered for new AC-powered trucks with the revolutionary compound that provides not only better traction to maximize the AC-motor initial torque advantage, but also the greatest load capacity for an extreme duty condition.

- **Heaviest Duty Cycle** - from a perfect combination of lower operating temperature new polyurethane compound and legendary XL³™ bonding technology - No Bond Failures Guaranteed*
- **Designed Specifically to Capitalize on the Higher Initial Torque Characteristic of New AC-Powered Trucks** - and to provide greater traction for heavy loads on slippery floors
- **Extreme Load Capacity** - from newest technology in polyurethane that extends the already excellent load carrying capacity of the industry leading Cushothane® XL™
- **Resolves Battery Drainage Issues in Cold Storage** - from low rolling resistance compound



**NO BOND
FAILURES**
Guaranteed!

*Refer to terms and conditions at www.superiortire.com



Management
Systems
Registered
to ISO 9001
Certified System
ISO 9001

1818 Penn. Ave. West, Warren, PA 16365
www.superiortire.com 1.800.289.1456